

I'M SO EXCITED

MUSIK & TEXT : JUNE, ANITA & RUTH POINTER & TREVOR LAWRENCE

ARR.: STEWART BURGESS

1ST ALTO

♩ = 185

2

VAMP

sfz

sfz

19 VOCALS

8

27

8

35 (BRIDGE)

2

2

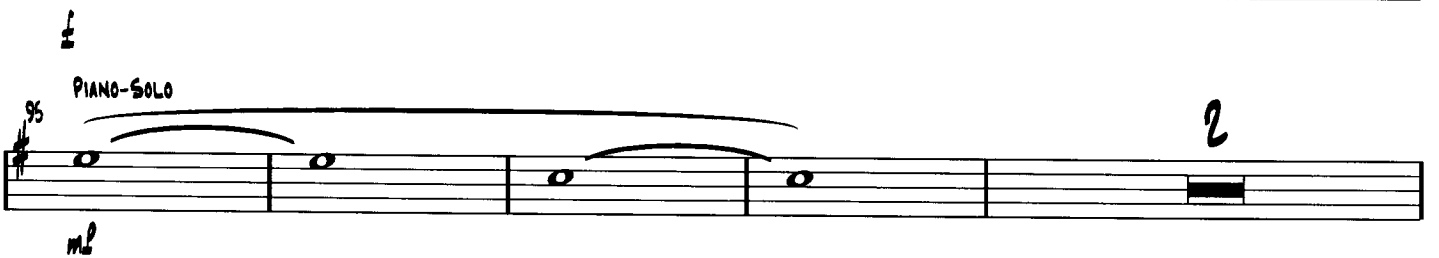
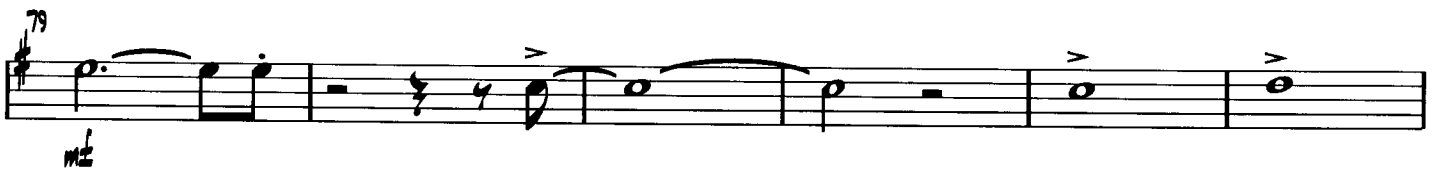
mf

43

47 (CHORUS)

mf

"I'M SO EXCITED" - 1ST ALTO - 2



"I'M SO EXCITED" - 1ST ALTO - 8

108

111 (BRIDGE) 8

119 123 (CHORUS)

128 131

139 DRUMS & PERC.-SOLO 8

147 8

155

"I'M SO EXCITED" - 1ST ALTO - 4

163
mf

171

179
f

187
ff

I'M SO EXCITED

MUSIK & TEXT : JUNE, ANITA & RUTH POINTER & TREVOR LAWRENCE

ARR.: STEWART BURGESS

2ND ALTO

1 ♩ = 185

2

VAMP

5

sfz

11

sfz

19 VOCALS

8

27

8

35 (BRIDGE)

mf

2

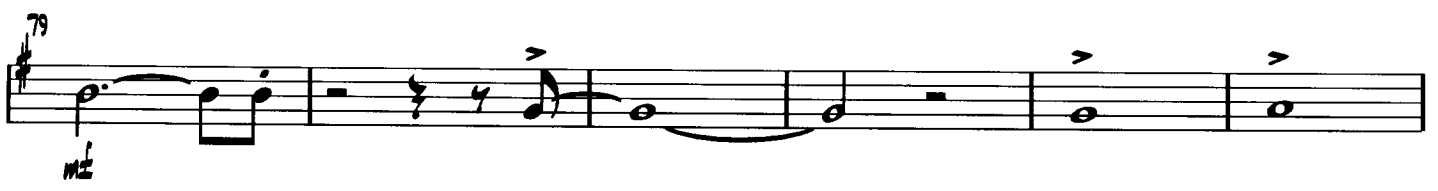
2

43

47 (CHORUS)

mf

"I'M SO EXCITED" - 2ND ALTO - 2



"I'M SO EXCITED" - 2ND ALTO - 3

103

111 (BRIDGE) 8

119 123 (CHORUS) *mf*

128 131

139 DRUMS & PERC. SOLO 8

147 8

155 *mf*

"I'M SO EXCITED" - 2ND ALTO - 4

163
mf

171

179
f

187
ff

I'M SO EXCITED

MUSIK & TEXT : JUNE, ANITA & RUTH POINTER & TREVOR LAWRENCE

ARR.: STEWART BURGESS

BARITONE-SAX

Tempo: ♩ = 185

Measures 1-2: Treble clef, key signature of one sharp (F#), 4/4 time. Measure 1 contains a whole rest. Measure 2 contains a whole note chord. A 'VAMP' section is indicated by a double bar line with repeat dots.

Measures 3-4: Treble clef, key signature of one sharp (F#), 4/4 time. Measure 3 contains a whole note chord. Measure 4 contains a whole note chord. Dynamics marking: *sfz*.

Measures 5-6: Treble clef, key signature of one sharp (F#), 4/4 time. Measure 5 contains a whole note chord. Measure 6 contains a whole note chord.

Measures 7-8: Treble clef, key signature of one sharp (F#), 4/4 time. Measure 7 contains a whole note chord. Measure 8 contains a whole note chord. Dynamics marking: *sfz*.

Measures 9-10: Treble clef, key signature of one sharp (F#), 4/4 time. Measure 9 contains a whole note chord. Measure 10 contains a whole note chord.

19 VOCALS

Measures 19-26: Treble clef, key signature of one sharp (F#), 4/4 time. Measure 19 contains a whole rest. Measure 20 contains a whole note chord. Measure 21 contains a whole rest. Measure 22 contains a whole note chord. Measure 23 contains a whole rest. Measure 24 contains a whole note chord. Measure 25 contains a whole rest. Measure 26 contains a whole note chord. Measure numbers: 19, 27, 8.

35 (BRIDGE)

Measures 35-40: Treble clef, key signature of one sharp (F#), 4/4 time. Measure 35 contains a whole note chord. Measure 36 contains a whole note chord. Measure 37 contains a whole rest. Measure 38 contains a whole note chord. Measure 39 contains a whole rest. Measure 40 contains a whole note chord. Measure numbers: 35, 2, 2.

"I'M SO EXCITED" - BARITONE - 2

45 47 (CHORUS)

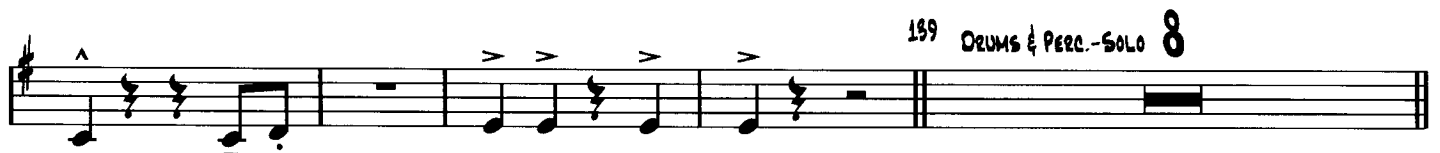
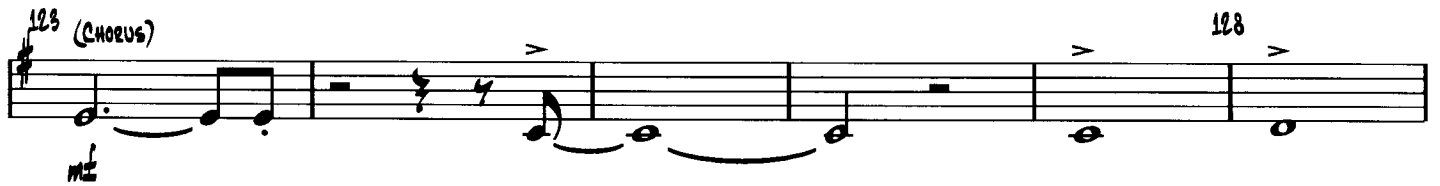
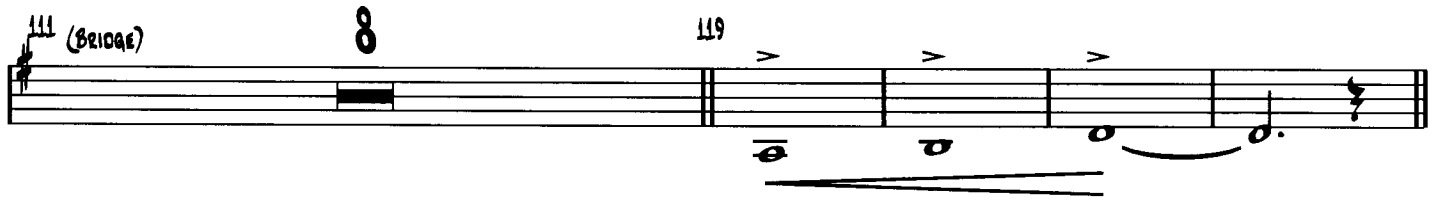
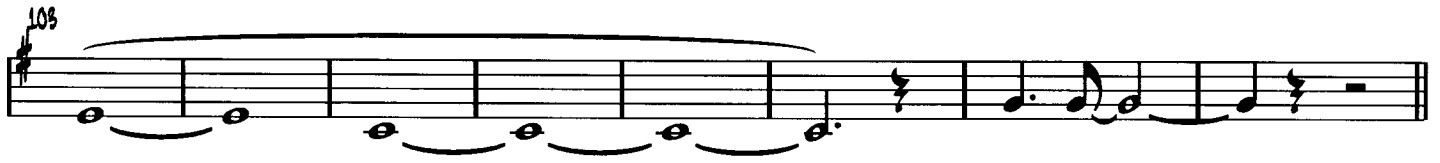
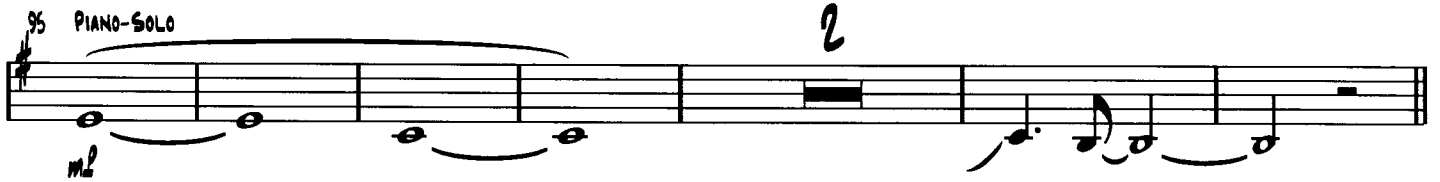
55

69 8 71 8

79

87

"I'M SO EXCITED" - BARITONE - 3



"I'M SO EXCITED" - BARITONE - 4

Musical score for baritone voice, measures 147-195. The score is written on seven staves. The first staff (measures 147-154) includes a fermata over measure 148 and a dynamic marking of *mf* at the start of measure 155. The second staff (measures 155-162) continues the melodic line. The third staff (measures 163-170) includes a dynamic marking of *mf* at the start. The fourth staff (measures 171-178) continues the melodic line. The fifth staff (measures 179-186) includes a dynamic marking of *f* at the start. The sixth staff (measures 187-194) includes a dynamic marking of *ff* at the start. The seventh staff (measures 195-195) consists of four accented quarter notes followed by a whole rest.

I'M SO EXCITED

MUSIK & TEXT : JUNE, ANITA & RUTH POINTER & TREVOR LAWRENCE

ARR.: STEWART BURGESS

1ST TENOR

Tempo: ♩ = 186

2

VAMP

3

sfz

sfz

11

sfz

sfz

19 VOCALS

8

27

8

35 (BELOAE)

2

2

mf

"I'M SO EXCITED" - 1ST TENOR - 2

45 *mf* 47 (CHORUS)

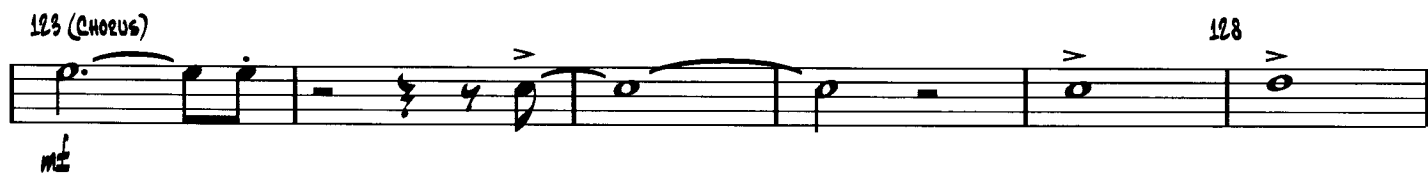
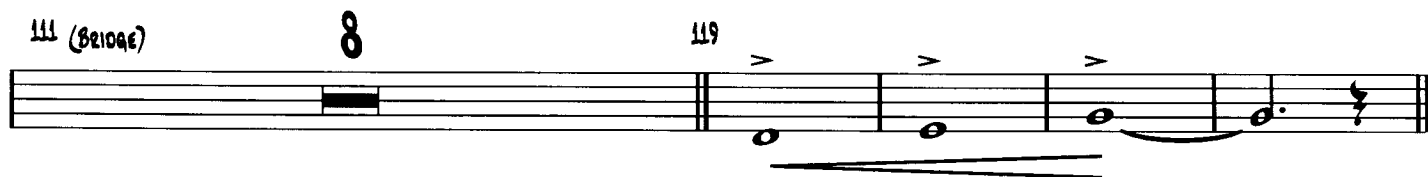
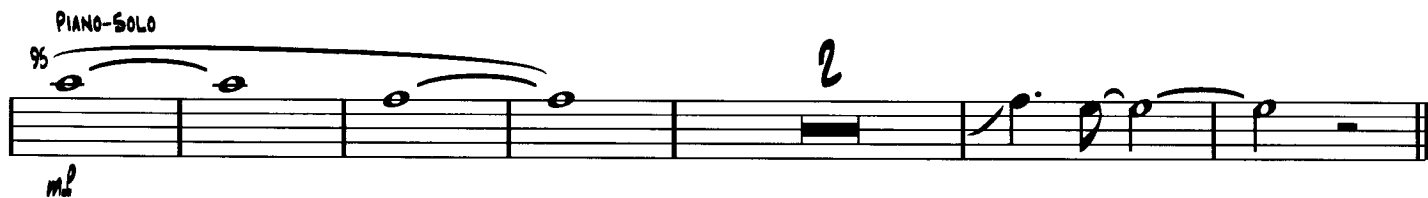
55

63 71

79 *mf*

87

"I'M SO EXCITED" - 1ST TENOR - 3



"I'M SO EXCITED" - 1ST TENOR - 4

147

8

155



163



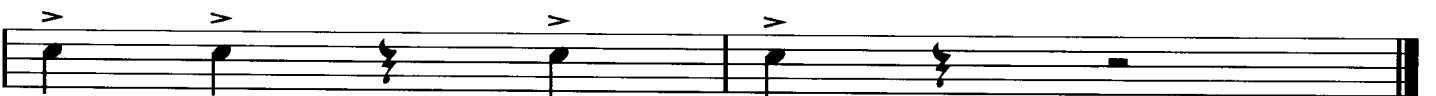
171



179



187



I'M SO EXCITED

MUSIC & TEXT : JUNE, ANITA & RUTH POINTER & TREVOR LAWRENCE

ARR.: STEWART BURGESS

2ND TENOR

Tempo: ♩ = 185

2

VAMP

3

sfz

sfz

11

sfz

sfz

19 VOCALS

8

27

8

35 (BRIDGE)

2

2

mf

"I'M SO EXCITED" - 2ND TENOR - 2

45 47 (CHORUS)

mf

55

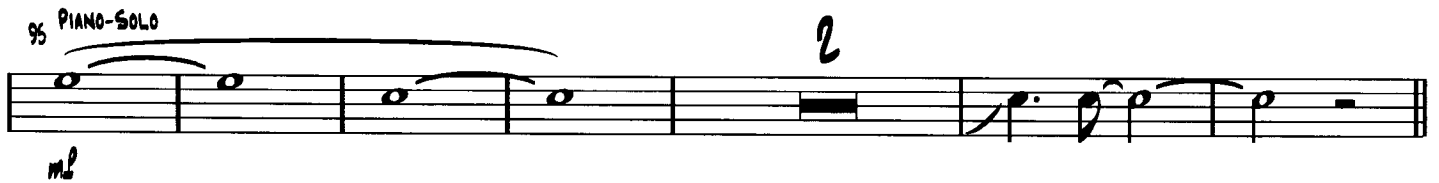
63 8 71 8

79

mf

87

"I'M SO EXCITED" - 2ND TENOR - 5

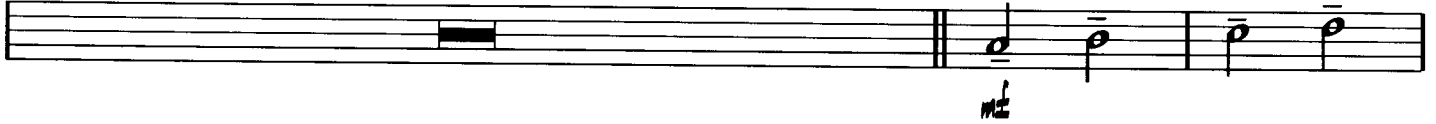


"I'M SO EXCITED" - TENOR - 4

147

8

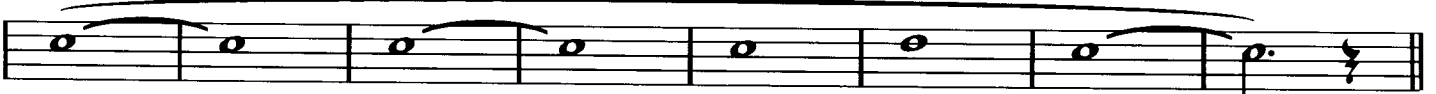
155



163



171



179



187

